

MONTHLY MEMBERSHIP PROGRESS REPORT

LOCATION INDIA

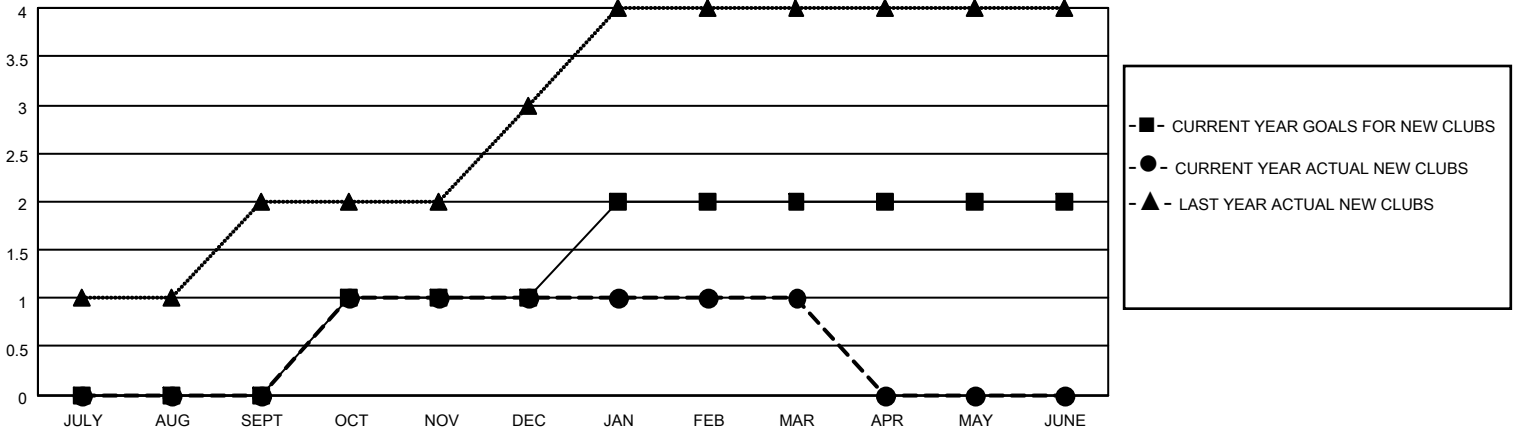
District 317 B

Results as of: 3/31/2021

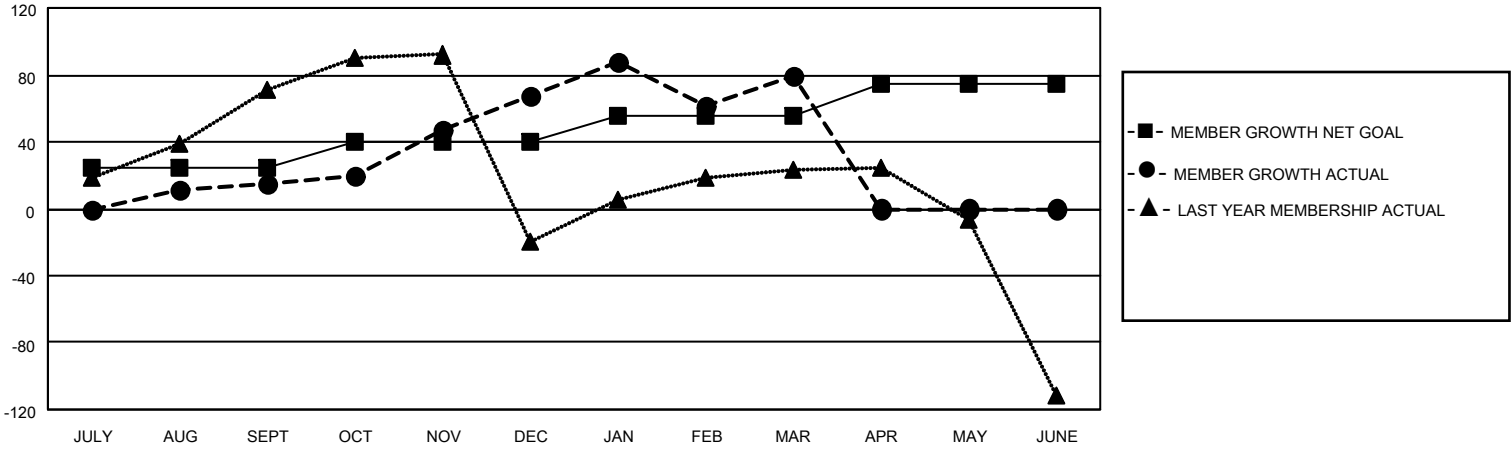
Clubs			
RESULTS FOR 2020-2021			
QUARTER	NEW CLUB GOAL	NEW CLUBS	DROPPED CLUBS
JULY/AUG/SEPT	0	0	0
OCT/NOV/DEC	1	1	0
JAN/FEB/MAR	1	0	2
APR/MAY/JUNE	0	0	0

Members			
RESULTS FOR 2020-2021			
QUARTER	MEMBER GROWTH NET GOAL	MEMBER GROWTH ACTUAL	DROPPED MEMBERS ACTUAL (including transfers)
JULY/AUG/SEPT	25	81	58
OCT/NOV/DEC	15	151	98
JAN/FEB/MAR	15	65	44
APR/MAY/JUNE	20	0	0

GOALS AND ACTUAL NEW CLUBS CUMULATIVE



GOALS AND ACTUAL MEMBERS CUMULATIVE



DROPPED CLUBS: 2

53 CLUBS OF 104 ADDED 1 OR MORE NEW MEMBERS

GENDER DISTRIBUTION

MALE 2,854 (80.60%)
 FEMALE 687 (19.40%)

DROPPED MEMBERS

[CLICK HERE FOR CUMULATIVE MEMBERSHIP DATA](#)

DECEASED	24
CLUB CANCELLED	30
OTHER	146
TOTAL	200

TOTAL FAMILY UNIT MEMBERS	1,035
FAMILY MEMBERS PAYING HALF DUES	548